

NEW STUDENT profiles

ESPP welcomes five newly affiliated specialization students. Find expanded profiles of these and other students at www.environment.msu.edu.



Wu

Wu Yang

Fisheries & Wildlife

Wu Yang earned his bachelor's degree from Zhejiang University, the top-ranked university for environmental sciences in China. His research experience there ranged from ecological economics and urban ecology to environmental modeling and conservation biology. He has been primary author of two papers, one of which was accepted by "Ecological Economics."

At MSU, Wu plans to earn his master's and Ph.D. in fisheries and wildlife. He has



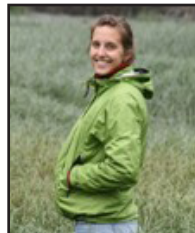
Nordin

joined a study of human interaction with giant pandas in Sichuan province, China, led by MSU professor Jack Liu.

Wu is interested in interactions between human and natural systems, which he said have become unavoidable. "Today, I think, there are no pure natural systems," he said.

He said he hopes to integrate ecology, socioeconomics, management and environmental modeling in the study of those interactions.

Yet, no matter what specific project he's working on, Wu's



Rober

overall purpose is clear: "The final goal is sustainability," he said.

Norbismi Nordin

Packaging

Norbismi Nordin is at work on a Ph.D. in packaging, having earned a master's degree in packaging from MSU in 2005.

She majored in chemical engineering as an undergraduate in Malaysia, but wanted her graduate work to connect her engineering knowledge to food packaging.

Nordin became part of the



Kelly

ESPP specialization to learn more about social science, and her research examines packaging through that lens.

She's especially interested in establishing labeling guidelines for sustainable packaging, and for products that contain nanotechnology.

"People have a right to know what's inside," she said. "It's their right to decide to buy what's in a package."

Nordin's studies are sponsored by the Malaysian government, so when she finishes

see **STUDENTS** on next page



Perdinan

Faculty Profile

Newest CHANS hire brings sociology, environmental modeling expertise

Sandy Marquart-Pyatt arrives at MSU this fall as part of a hiring cluster in Coupled Human and Natural Systems (CHANS), the study of complex interactions within and among natural and human systems.

In her work, Marquart-Pyatt, who is jointly appointed in Sociology and ESPP, has particularly unpacked the human side of the dynamic. Many layers are involved in articulating relationships between societies and environments, including individuals, households, communities, states, regions, and nations. She uses multi-level or nested modeling to articulate these dynamics.

Marquart-Pyatt's interest in questions of scale and comparison has led her away from her origins as an English major; today, she's a self-professed "statistics geek" and expert in stats-heavy modeling.

This toolkit has allowed her to explore a diverse set of issues related to environment and politics. Most recently, as an assistant professor at Utah State, she has studied what influences environmental



attitudes and behaviors cross-nationally, and how these intersect with political beliefs and actions. She works on topics both local and global, from the sustainability of communities in Utah to environmental concerns comparatively. She's also interested in environmental issues in Poland.

"I'm a sociologist by training," Marquart-Pyatt said, "but my areas of interest within sociology are pretty diverse."

This fall, in addition to teaching a course in political sociology, she'll work with Laura Schmitt Olabisi (Community, Agriculture, Recreation and Resource Studies) and Arika Ligmann-Zielinska

(ESPP and Geography), also members of the CHANS hiring cluster, to see how her expertise fits into broader environmental modeling efforts at MSU.

Marquart-Pyatt said she "absolutely fell in love with the campus" on a visit to MSU, and she's excited about working at a school with a commitment to interdisciplinary work.

"I'd heard a lot about MSU as an institution, and about ESPP as a program. There are so many great things going on at MSU that I thought my research would fit in well, and would also benefit from it. I'm really looking forward to the collaborative opportunities."